

HTS-9a

SPECIFICATIONS

ENERGY EFFICIENT LED LIGHTING 70 to 100 watt Replacement

*UL & CUL rated, #E326977

*Made and Assembled in United States by
Bare Development 5425 9th Ave. Countryside, IL 60525

FEATURED HIGHLIGHTS

- *Unlimited application possibilities due to RETROFITTING
- *Saves up to 79% of energy consumption
- *100,000 hour lifespan 5 Yr. Manufacturers registered warranty
- *Maintenance Free
- *Return on Investment between 18 and 40 months
- *Green Product

The HTS-9a was specifically designed for Wall packs and decorative lighting retrofits. Its superior heat management and compact design make it ideal for retrofitting existing fixtures commonly found in these environments.

ENVIRONMENTAL FEATURES

- *Contains no Mercury or Lead
- *Does not produce UV Rays
- *Does Not Attract Insects
- *Directional Light means No Light Pollution

ELECTRICAL SPECIFICATIONS

- *47 to 63 Hertz ac line power voltage from 90 VAC RMS to 277 VAC RMS
- *available to 480 VAC
- *nominal operating efficiency is 85% typical at 230VAC and maximum load
- *Driver provides surge protection at 305 VAC
- *Power distributed to onboard drivers per six LED lights

OUTPUT SPECIFICATIONS

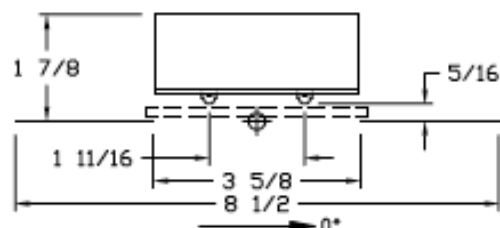
- *Cree Inc XR-E X Lamp 3 watt LED
- *Number of Lights 12 = 29.8 watts
- *CRI 75
- *Lumens 1559 at 100%
- *Efficacy 52.3 Lm/W
- *Chromaticity: White Light 5600k
- *Junction Temperature <60°C
- *IESNA Tested LM79 & LM80
- *Operating Range of -30°C TO 70°C
- *Nominal Lumens per watt 100
- *EMC: Compliant to 47 CFR, Part 2, 15

ASSEMBLY

- *Epoxy Glass PC Board with Copper Circuitry
- *One piece aluminum heat sink dissipates heat
- *Vibration resistant
- *ASTM and NEMA Tested

DIMENSIONS

7.25" x 3.625" x 1.50"



APPLIATIONS

- *Wall Packs
- *High Bay Fixtures
- *Parking Garages
- *Parking Lots
- *Gas Station Canopies