

HTS-9

SPECIFICATIONS

ENERGY EFFICIENT LED LIGHTING 150 to 250 watt Replacement

*UL & CUL rated, #E326977

*Made and Assembled in United States by
Bare Development 5425 9th Ave. Countryside, IL 60525

FEATURED HIGHLIGHTS

- *Unlimited application possibilities due to RETROFITTING
- *Saves up to 79% of energy consumption
- *100,000 hour lifespan 5 Yr. Manufacturers registered warranty
- *Maintenance Free
- *Return on Investment between 18 and 40 months
- *Green Product

The HTS-9 was specifically designed for Wall packs and parking structures. Its superior heat management and compact design make it ideal for retrofitting existing fixtures commonly found in these environments.

ENVIRONMENTAL FEATURES

- *Contains no Mercury or Lead
- *Does not produce UV Rays
- *Does Not Attract Insects
- *Directional Light means No Light Pollution

ELECTRICAL SPECIFICATIONS

- *47 to 63 Hertz ac line power voltage from 90 VAC RMS to 277 VAC RMS
- *available to 480 VAC
- *nominal operating efficiency is 85% typical at 230VAC and maximum load
- *Driver provides surge protection at 305 VAC
- *Power distributed to onboard drivers per six LED lights

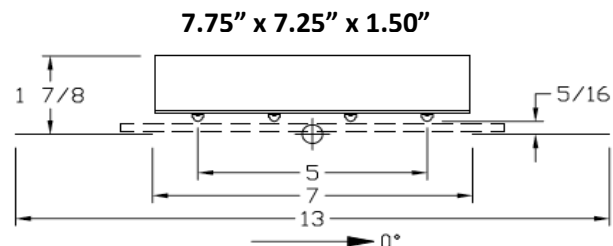
OUTPUT SPECIFICATIONS

- *Cree Inc XR-E X Lamp 3 watt LED
- *Number of Lights 24 = 57.4 watts
- *CRI 75
- *Lumens 3402 at 100%
- *Efficacy 59.27Lm/W
- *Chromaticity: White Light 5600k
- *Junction Temperature <60°C
- *IESNA Tested LM79 & LM80
- *Operating Range of -30°C TO 70°C
- *Nominal Lumens per watt 100
- *EMC: Compliant to 47 CFR, Part 2, 15

ASSEMBLY

- *Epoxy Glass PC Board with Copper Circuitry
- *One piece aluminum heat sink dissipates heat
- *Vibration resistant
- *ASTM and NEMA Tested

DIMENSIONS



APPLIATIONS

- *Wall Packs
- *High Bay Fixtures
- *Parking Garages
- *Parking Lots
- *Gas Station Canopies